

UK MINING CONFERENCE IN CORNWALL



Proudly created by



Cornish Lithium

PROGRAMME OF EVENTS

11 & 12 June 2025

Princess Pavilion & Gyllyngdune Gardens
41 Melvill Road, Falmouth, Cornwall, TR11 4AR



Welcome

On behalf of the organising committee, I would like to thank you all for attending this, the fifth UK Mining Conference in Cornwall. It was one of the many exciting projects that our local 'visionary, Jeremy Wrathall brought to fruition, from under 100 attendees in the first year to over 400 today.

Purpose

The purpose of this conference is to bring together people in the mining sector, and provide a unique platform to exchange knowledge. From exploration and investment to production, beneficiation and marketing, the attendees cover each part of the supply chain.

Content

This two-day conference, with the additional Geothermal Forum, Geologists Breakout Session and the Inside Mining Seminar, is combined with a Cornish pub supper, networking buffet and Gala dinner to provide a perfect forum for business and an appreciation of Cornish culture.

Speakers

Our agenda focuses on new, exciting discoveries, and on fresh methods of working original and existing mine sites. Our informative and engaging speakers share case studies from which we can learn. There is also a real example of how Chinese mining equipment is successfully using lithium batteries.

Conference etiquette

The theatre's capacity is 320; available on a first-in basis. The outdoor screens are in the café and marquee, with seating provided. We request that you don't enter (or exit) the theatre while a speaker is presenting.

Delegates

We're delighted to welcome delegates from over 15 different countries, including Australia, Brazil, Canada, Germany, Ireland, Italy, Poland, Scotland, South Africa, Sweden, Switzerland, The Netherlands, Turkey, USA, Wales and England (plus, of course, the ancient Celtic kingdom of Kernow).

Networking opportunities

Refreshments are served at each of the breaks in the café and marquee, where you'll find the exhibitors and 'outdoor' screens.

Photography

We have a photographer and videographer on site to capture the spirit of the events. If you prefer not to be photographed, just say. If you'd like a group shot, again, let them know.

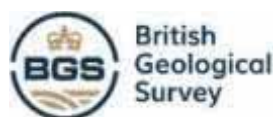
Finally

A particular thank you to our speakers, and to our sponsors who make the event possible. A big thank you also to the Conference Planning Committee, which has been influential and directional in the growth and development of this event. Please make yourself known to them, and let us know what we're getting right, any suggestions for the future and anything that you would like to see done differently. Enjoy 😊.

Jay One Events

ORGANISING COMMITTEE 2025	
Name	Organisation
Jeremy Wrathall	Cornish Lithium plc
Karen Oliver	Cornish Lithium plc
Claire Ringrose	Cornish Lithium plc
Jane Isaacs	Jay One Events Ltd
Carol Marson	Jay One Events Ltd
Chris Hinde	Pick & Pen Ltd
Fraser Gardiner	Aberdeen Minerals
Sally Norcross-Webb	Cornish Tin
Pat Foster	CSM
Richard Williams	Peak Nickel
Steve Holley	Cornish Metals
Paul Freeman	Inside Mining Seminar

SPONSORS & PARTNERS



SPONSORS & PARTNERS



MAYER | BROWN



PANMURE
LIBERUM



PEEL
HUNT



The CIS

THE INTELLIGENT MINER
WWW.THEINTELLIGENTMINER.COM



UK Export Finance



WOMEN
IN MINING





08.00	Exhibitor set up
08.30	REGISTRATION
09.30	Welcome! Carly Leonida, The Intelligent Miner
09.35	Driving the clean tech revolution Jeremy Wrathall, Cornish Lithium plc
09.55	Converging capabilities: how external perspectives can help meet the future demands of mining Rich Noyes, Baker Hughes
10.15	The energy transition, resource nationalism and tariffs: a new age of disruption for metals markets Alex Griffiths, Wood Mackenzie
10.35	Q&A with above speakers
10.40	3-minute supplier presentations Michael Allen, Bunting Magnetics Europe Ltd Bruce Bailey, Siemag Tecberg UK Ltd Mark Butcher, Bentley Systems (UK) Ltd Doug Caffell, Sepro Mineral Systems Samantha Damon, Atlantic Pumps Jamie Hinch, University of Oxford student
11.00	Presenting the past to inspire the future Carol Richards & Peter Snodgrass, King Edward Mine Museum
11.10	BREAK
11.30	Advancing the South Crofty tin mine towards production Don Turvey, Cornish Metals
11.50	Driving the development of green mining with the Great Wheal Vor project Sally Norcross-Webb, Cornish Tin
12.10	Auld Nick's copper and other tales from the Shire Fraser Gardiner, Aberdeen Minerals
12.30	Overview of the Geologists' Breakout session Fraser Gardiner, Aberdeen Minerals
12.35	Overview of the Geothermal Forum Mike King/Lucy Cotton, Cornish Lithium/Eden Geothermal
12.40	Q&A with above speakers
12.45	New policies Daniel Howell & Mark Godden, HSE
13.00	LUNCH
14.00	Welcome back Declan Vogt, Camborne School of Mines
14.05	Reducing emissions through energy efficient design Toby Frostwick, AFX Mixing & Pumping
14.25	Full tensor gravity gradiometry data to the O&G and mining industries Sian Grant, Bell Geospace Ltd
14.45	Process development: setting up projects for success Edward Hollings, Hatch
14.55	100% exploration and 100-year mining rights over the Rodburn Project in Scotland Richard Williams, Peak Nickel
15.05	Q&A with above speakers
15.10	BREAK
15.30	The secret mineral deposits of the UK James McFarlane, Bara Consulting
15.50	From great depths to new heights – exploring how innovations in hoisting enable safe and sustainable underground mining Wendy Norman, ABB
16.10	Q&A with above speakers
16.15	The Peter Hackett Education Panel Discussion Pat Foster, Camborne School of Mines Lucy Crane, ESG Consultant Angela Bentley, ESTA Suzie Doe, Minerals Matter Mark Cutifani, Vale Base Metals
16.50	Q&A with above panel
17.00	Bar sponsored by Micon
18.00	BUFFET SUPPER AT FALMOUTH HOTEL



09.00	REGISTRATION
09.30	Welcome: Day 2 Tim Blythe, Blytheray
09.35	The UK's defence and security think tank Henry Sanderson, Royal United Services Institute (RUSI)
09.55	Challenging conventional flowsheets to accelerate sustainable mining Erik Vlot, Weir
10.15	Greener ground: exploring low-carbon fuel options for mining equipment Dean Thornewell, Liugong Machinery (UK) Ltd
10.25	Q&A with above speakers
10.30	Mine regeneration as a Cornish growth engine Nick Hilton, ERM
10.45	Lithium classification: an opportunity for the UK to lead Roland Chavasse, International Lithium Association
10.55	Using hydrocarbon thinking and tools to explore for minerals in the subsurface – the holistic mindset for mineral prospectivity Graeme Nicholl, Halliburton
11.05	Q&A with above speakers
	BREAK
11.30	Accessing public markets Lauren Crawley-Moore, London Stock Exchange
11.50	Delivering integrated investment banking Kieron Hodgson, Peel Hunt
12.10	The Finance Panel Discussion Jeremy Wrathall, Cornish Lithium plc Lauren Crawley-Moore, LSE Scott Mathieson, Panmure Liberum Kieron Hodgson, Peel Hunt Charles Hickson, UK Export Finance
12.40	Q&A with above speakers
12.45	MP for Camborne, Redruth and Hayle Perran Moon MP
13.00	LUNCH
14.00	Welcome back! Tim Blythe
14.05	Imports to Cornwall: reinvesting in mining – economically, socially and politically Jayne Kirkham MP for Truro and Falmouth
14.20	Legal rights over water – all you need to know (and more ...) Rob Bridgman, Gowling WLG (UK) LLP
14.40	Smarter sorting: TOMRA's AI evolution in action Jens-Michael Bergmann, Tomra
14.50	Driving innovation and practical solutions through the full mining lifecycle Kirsty Reynolds & John Merry, SRK Consulting
15.00	Q&A with above speakers
15.05	BREAK
15.25	Electrification and automation leads the way Ratna-Kanth Dittakavi, ABB
15.35	The reshoring of aluminium sheet production for cans and cars Gerald Keen, BACALL
15.45	Discover how social value shapes urban development Neil Walmsley, Hatch
15.55	The nation's premier provider of objective and authoritative scientific data Karen Hanghoj, British Geological Society
16.05	Q&A with above speakers
16.10	The Critical Minerals Panel Discussion <i>Is the UK well placed enough to take advantage of the new global critical minerals landscape?</i> Jeff Townsend, Critical Mineral Association Diane Frachon, SLB Nick Pople, Northern Lithium Karen Hanghoj, British Geological Society Rajaram Jamedagni, UK Export Finance Perran Moon MP
16.45	Q&A with above speakers
16.50	CLOSING REMARKS Jeremy Wrathall, Cornish Lithium plc & Founder of the UK Mining Conference
17.00	Bar sponsored by the International Lithium Association
18.00	Camel Valley 'champagne' reception at the Princess Pavilion
19.00	Gala Dinner/Bar Supper
21.00	Awards & John Sergeant after dinner speaker

EXHIBITORS

ABB


ABERDEEN
MINERALS

AEX MIXING AND PUMPING
TECHNOLOGIES

 **ATLANTIC**
PUMPS

Baker Hughes 

 **bam**
ritchies

BARA
CONSULTING

 **BellGeospace**

BRUKER

 **BUNTING**



 **Cornish Lithium**

Cornish Metals

 **Deswik**

HATCH

hidrostat

 **Howden**
A Chiri Industries Company

 **In-Situ** | water
simplified.

KGHM ZANAM

 **Malvern**
Panalytical
a spectris company

Premier Inn
Rest easy 

 **SANDVIK**
Ground support experts

SEEQUENT

 **sepro**

SIEMAG
TECBERG
group

 **MONDE**
REPRESENTED BY
 **SME TECHNOLOGIES**

 **srk**

 **The CIS**

UCP
AFRICA
Integrated Case Products Africa (Pty) Ltd

 **UK Export Finance**

 **WALKERSONS**
MINING SOLUTIONS

WEIR
Mining technology for a sustainable future

 **Zitron**
UK



- Marquee
- Theatre
- Registration / Jay One
- Refreshments/Water Stations
- Electric Sockets (2x13a)
- Layout subject to change



Princess Pavillion
Scale 1:200



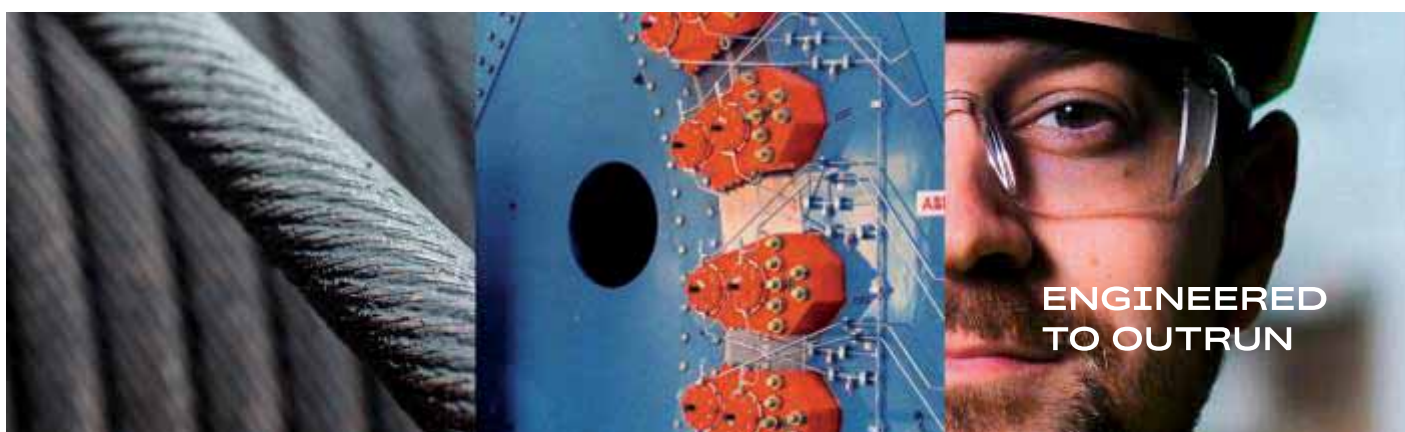
THE NEXT EVOLUTION IN MINE SAFETY

As mines reach deeper depths and infrastructure ages, the risks associated with hoisting operations grow more complex.

In our latest whitepaper, we explore the trends, challenges, and innovative solutions in safety that are transforming the future of mine hoisting.



Download the
whitepaper
today.



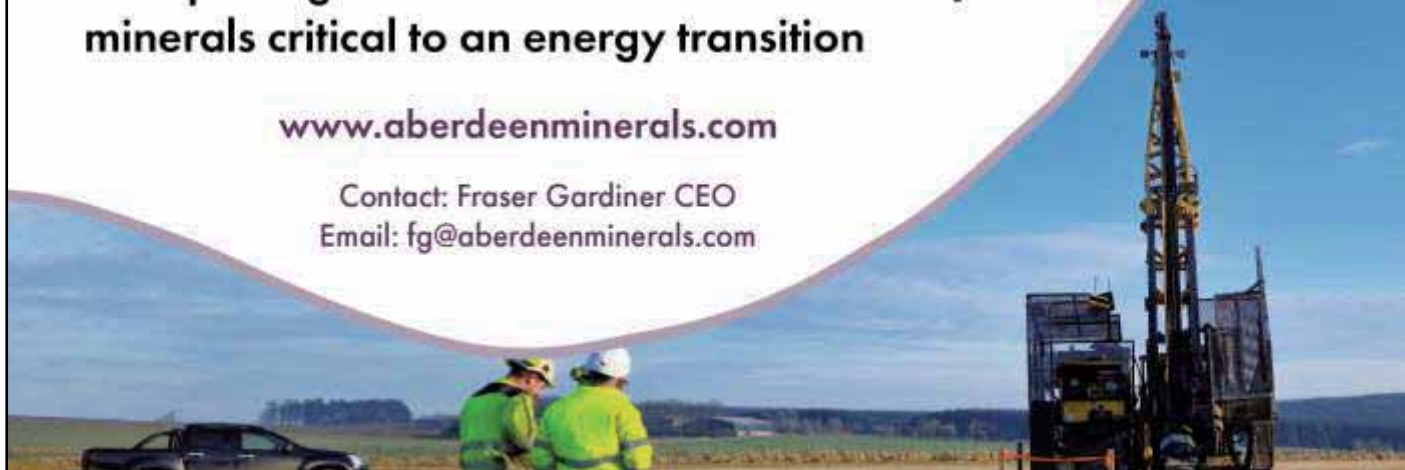
ABERDEEN
MINERALS



**Exploring North East Scotland for
minerals critical to an energy transition**

www.aberdeenminerals.com

Contact: Fraser Gardiner CEO
Email: fg@aberdeenminerals.com





Ratna Kanth Dittakavi

ABB - Global eMine Sales Manager

Ratna Kanth is Global Sales Manager – eMine, supporting and promoting the acceleration of mining industry to achieve de-carbonisation goals by electrifying mines. Ratna brings 23 years of experience in various areas of industrial control systems, cyber security, life cycle management and mine electrification solutions.



Wendy Norman

ABB - Head of Sales, Hoisting

Wendy joined ABB in 2020, bringing over 15 years of experience in the mining industry in South Africa and Canada, specialising in mine hoist systems and solutions. Wendy manages a talented team of sales professionals, overseeing the development and implementation of sales strategies and market growth whilst actively helping partners and customers to mine safely and sustainably.

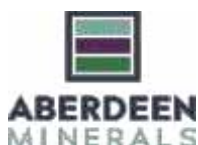


Fraser Gardiner

Aberdeen Minerals Ltd – CEO

Fraser is a geologist with a 27 year career in industry and he holds a degree in Geology and Applied Geology from the University of Glasgow. His first job after graduating was as an exploration geologist in Bulgaria, which led to being the project lead in the early exploration of the Ada Tepe gold deposit, now a high grade open pit gold mine producing 100,000 ounces per year. Since then, he has worked as geologist and exploration manager on discovery, exploration and mine development projects for gold, copper, tungsten and nickel in Europe, North Africa, the Middle East and South East Asia. Roles have included Country Exploration Manager – Saudi Arabia for Barrick, and Chief Operating Officer for AIM listed Ormonde Mining.

After finally moving back home to Scotland during the pandemic, Fraser joined Aberdeen Minerals Ltd as CEO in July 2022 and is relishing the exploration for battery metals and critical minerals within the prospective geology of Aberdeenshire.



Specialist manufacturer of **Agitators and Peristaltic Hose Pumps**



- Extensive global experience
- Over 30 years industry experience
- Over 5000 successful installations
- Measurable energy saving solutions
- Units from 0.18kW to 750kW



www.afxmixing.co.uk



contact@afxmixing.co.uk

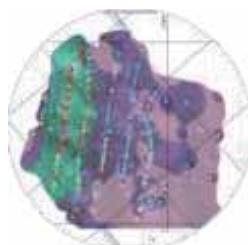


+44 (0)1202 798452



Bespoke Techno-Economic Solutions for the Global Mineral Resources Industry

Geology & Resources : Mining : Metallurgy & Processing : Mine Infrastructure : ESG



Peer Review : Due Diligence : Scoping, Pre-Feasibility & Feasibility Studies : Detail Design

With a multi-disciplinary presence in the UK, RSA & Canada:

UK	Andrew Bamber	bamber@bara-consulting.com
UK	Galen White	galen.w@bara-consulting.com
Canada	Curtis Clarke	curtis.c@bara-consulting.com
RSA	Etienne de Villiers	etienne.dv@bara-consulting.com
Global	Jim Pooley	jim.p@bara-consulting.com



Toby Frostwick

AFX Mixing and Pumping Technologies Ltd – Director

Toby Frostwick is a director of AFX Mixing and Pumping Technologies Ltd and a leading specialist within the fields of global mining and process related technologies.

A mechanical engineer by training, Toby has over 40 years industry experience, including as a Global Product Manager of the Weir Group plc and Engineered Products Manager of the Watson-Marlow Pump Group. Toby is regarded as one of the world's leading authorities in peristaltic hose pumps and has consulted on numerous global projects, for clients such as Glencore, First Quantum Minerals and Anglo Platinum.

Having consulted for several years for Afromix Africa, successfully helping to develop its peristaltic pump range, Toby was asked in 2015 to head up the European division of the AFX Holdings Group and became involved in the diverse world of mixing technologies. Since then, Toby has been involved in a number of significant projects involving challenging mixing applications, including a number within the evolving Cornish mining scene.



Richard Noyes

Baker Hughes - Global Sectors Director

Rich has over two decades of commercial, technical and continuous improvement experience within the energy, industrial and semi-automotive sectors.

Having spent the first 12 years of his career working across the value chain with Caterpillar, most latterly as a Six Sigma Master Black Belt, he led their Industrial Power System Division global supply chain strategy. In 2010, he relocated to Austria to join GE's Energy division, applying Six Sigma within the engineering function at Jenbacher Gas Engines.

On return to the UK, and for the next 11 years, he assumed commercial responsibility for core elements of the GE Oil & Gas, now part of Baker Hughes' rotating equipment relationship with BP. Since 2022, as Sectors Director, Rich has been providing leadership of Baker Hughes business development activity in new sectors, with specific focus on UK Geothermal, and the global mining and metals sector.



Gerald Keen

BACALL - Director

Gerald is a Director of BACALL and Keen Ltd, which he founded in 2001. He leads and manages design and engineering projects across various sectors, including commercial real estate, the construction industry, building information modelling, and more recently, in the UK aluminium industry.

For the past five years, he has co-led, alongside his brother Charles Keen, the development of a UK aluminium sheet supply chain, which has since evolved into BACALL, a consortium focused on sustainable aluminium production and ultra-low carbon alloys for the packaging and automotive industries. He is a graduate in Electronics Engineering.

BACALL



BellGeospace

Unlock UK's Critical Minerals with Powerful, Passive, Exploration tools

High resolution geophysical surveys are key to efficient, lowered-risk exploration.

Partner with Bell Geospace and benefit from world class Full Tensor Gravity Gradiometry data acquisition, processing and interpretation methods.

Our approach guarantees minimal disruption to UK communities, wildlife and livestock. Our unparalleled expertise will help discover mineral-rich areas faster and smarter.

info@bellgeo.com | www.bellgeo.com



The Original Crusher People



International Crushing Heritage since 1897

With over 125 years of experience, BJD Crushers, formerly British Jeffrey Diamond, offers an extensive range of high capacity crushing and material processing equipment designed to control product size in the mining industry.

Designed and manufactured in the UK, BJD products are exported throughout Europe, Africa, Asia, Oceania, North and South America.



From Ore to Output: Complete Crushing Solutions

BJD Crushers deliver exceptional performance with machinery engineered for maximum throughput, durability, and cost efficiency. Our comprehensive portfolio features Hammermill, Flexmill, Impactor, Mudhog, Double Roll, and Flextooth Crushers.

Check out our new website: www.bjdcrushers.co.uk

Power Park Industrial Estate, Calder Vale Road, Wakefield, WF1 5PE
sales@bjdcrushers.co.uk

A member of





James McFarlane

Bara Consulting Ltd

James is a globally experienced technical mining professional, with a strong background in both UK and international mining operations, holding senior roles in active mining operations in England, Wales, Scotland, Ireland and Australia, and also as a mining consultant supporting exploration and project development studies across a range of commodities worldwide.

He is an associate Principal Consultant (Mining & Geology) with Bara Consulting, an independent geological, engineering, processing and ESG-focussed consulting firm providing services to the international mining sector. James is also a Non-Executive Director of Vast Resources plc.



James holds a MSc from CSM in Mining Geology, is a Chartered Geologist, Chartered Engineer and Registered Professional Geoscientist in Mining and Mineral Exploration. He is a Fellow of the IOM3, Geological Society of London, the Institute of Quarrying, the North of England Institute of Mining and Mechanical Engineers and is also a Member of the Australian Institute of Geoscientists.



Sian Grant

Bell Geospace Ltd - Business Development Manager

Sian is a skilled geoscientist with extensive experience in regional sales and marketing. She holds a BSc in Physics from the University of Glasgow and built a career in oil, energy and software industries, in B2B sales, account management, and digital marketing. In 2024 Sian joined Bell Geospace Business Development Manager (Europe, Middle East & Africa).



Tim Blythe

BlytheRay - Founding Partner

Tim Blythe is the Founding Partner of BlytheRay, the UK's leading communications advisor to the mining industry which advises miners around the world. BlytheRay's clients range from explorers to producers and from private businesses to companies listed on the London, Toronto and Australian Exchanges.

Tim started his PR career as a Press Secretary in the Thatcher administration of the 1980s. He then spent time as the Head of PR for the NatWest Group before joining the Brunswick Group. After that he was on the Executive Boards of WH Smith Group and Rolls Royce plc handling global investor relations, investor relations and PR. Tim founded BlytheRay in 2007.

Moderator



- Heavy-duty magnetic separators for crusher, screen, and conveyor protection
- Magnetic and Electrostatic separation for mineral beneficiation
- Laboratory services for support in research and feasibility studies



Oil Cooled Overband Magnet



Magnetic Disc Separator

BUNTING-REDDITCH.COM



Jones & Wagener UK

Engineering & Environmental Consultants

Technical excellence. Innovative **solutions.**

Specialist services include:

- ☐ Geotechnical Investigations
- ☐ Geotechnical Engineering
- ☐ Environmental Sciences

For more details visit:
www.jonesandwagener.co.uk





Karen Hanghøj

British Geological Survey - Director

Karen Hanghøj is the Director of the British Geological Survey. She is a geologist with extensive experience in research and innovation management and the minerals and metals industry. Karen is passionate about understanding the complexity of resource management, about environmental and social sustainability, and about the role of geoscience in finding solutions to societal challenges.

Karen holds a PhD in Geology from University of Copenhagen and has worked with research on geological processes in the lower crust and mantle and their associated mineral deposits, before taking senior leadership roles in research and innovation organisations. She is a member of a range of international committees and working groups



Declan Vogt

Camborne School of Mines

Moderator

Declan graduated with a degree in Electrical Engineering, worked for 15 years developing novel geophysical instrumentation, then for 15 years in research management and leadership. He is now teaching electronics and robotics to mining and other engineers.



Patrick Foster

Camborne School of Mines - Director

Pat is the Director of the Camborne School of Mines, part of the University of Exeter where he lectures and undertakes research into the health, safety and working environment aspects of mining and quarrying. His particular research interests are in safety and risk management systems, human factors and ESG. He is a Council Member of the Mining Association of the UK and was a part of the trailblazer group that developed and submitted a specification for a degree apprenticeship in mine management.

He graduated in Mining Engineering from the University of Nottingham and continued there to undertake a PhD looking into safety risk assessment in the mining industry supported by British Coal. He then joined International Mining Consultants Ltd as a Mine Safety Consultant where he was involved in health & safety management system audits, risk assessment training and research in the UK, India and South Africa.





SUPPORTING THE UK'S ENERGY TRANSITION

Cornish Lithium is pioneering the clean extraction of lithium to support the UK's transition to renewable energy and secure a domestic supply for the batteries that power smartphones, laptops, and electric vehicles.

Our innovative projects focus on the environmentally responsible extraction of lithium from hard rock and geothermal waters in the historic mining district of Cornwall.

Set to provide around 30% of the UK's lithium needs by 2030.

Celebrating Cornwall's 4,000 years of unique mining heritage.

Committed to environmentally responsible lithium extraction.



Find out more at cornishlithium.com



Lauren Crawley-Moore

London Stock Exchange Plc - Regional Lead, London & The South, UK Primary Markets

Lauren Crawley-Moore heads regional coverage for London and the South within the Primary Markets team. Lauren is responsible for providing guidance to ambitious private companies and their investors in their initial and on-going assessment of a potential IPO strategy. Lauren is responsible for leading the portfolio in London and the South region across AIM and the Main Market. Lauren works with key stakeholders including companies and the corporate advisory, private equity and VC communities - including nominated advisers, sponsors, lawyers, and accountants.



**LONDON
STOCK
EXCHANGE**

An LSEG Business



Jeremy Wrathall

Cornish Lithium plc - Founder & CEO

Jeremy graduated from the Camborne School of Mines in 1985 with a BSc (Hons) in Mining Engineering and is a Fellow of the Institute of Materials, Minerals and Mining. Having initially worked in the South African gold mining industry Jeremy enjoyed a successful investment banking career before founding Cornish Lithium in 2016 and running the company full time in early 2017. Since securing its first external funding in 2017 the company has grown significantly and now employs over 120 people, most of whom are located in Cornwall.

Cornish Lithium is an innovative mineral exploration and development company focused on the environmentally responsible and sustainable extraction of lithium from both geothermal waters and hard rock. The company seeks to provide a secure domestic supply of decarbonising metals considered vital to the industrial strategy of the UK and the move towards a Net Zero economy.



Cornish Lithium



Mike King

Cornish Lithium plc - Vice President Business Development & Government Relations

Mike has over 20 years' experience in oil and gas exploration, business development, commercial and production project management in the USA, UK and other international markets. He has spent time in senior government roles and as Executive Director in the Welsh Development Agency (2001-2005) before working in the Government of Jersey (2005-2017).



Cornish Lithium

The logo for Cornish Metals, with 'Cornish' in orange and 'Metals' in white on a dark blue background.A photograph of a large industrial building with vertical corrugated metal siding and a tall, dark metal structure with a flag on top, set against a blue sky with light clouds.

Responsibly Sourced Tin for a Low Carbon Economy

Cornish Metals Inc. is working towards re-opening its 100% owned, permitted South Crofty underground tin mine located in Cornwall, UK.

South Crofty is one of the highest-grade tin resources globally with potential to become a new, low-cost global producer.



\$201m

after-tax
NPV 8% /
29.8% IRR

4,700t

average tin
production in
years 2-6

\$13,700/t

low-cost LOM
average AISC

\$626m

cash
flow from
start of
production

\$83m

average
EBITDA
in years 2-6

www.cornishmetals.com

AIM/TSX-V: CUSN

The logo for Cornish Tin, featuring a stylized 'C' made of four black squares and the words 'Cornish' and 'Tin' in a green serif font.

Cornish Tin

High Grade Tin and Lithium
in Cornwall

www.cornishtin.uk



Don Turvey

Cornish Metals - CEO & Director

Don joined Cornish Metals in October 2024 as CEO and Director. Educated in South Africa, with a BEng in Mining & Mineral Engineering as well as a Masters in Business Leadership, Administration and Management, Don worked for BHP for 11 years, rising to VP of Project Development.

Don's experience spans coal mining, mineral processing and trading, as well as rehabilitation, material handling, crushing and screening.

Cornish Metals Inc is a dual-listed company working towards re-opening its 100% owned, fully permitted South Crofty underground tin mine located in Cornwall. South Crofty is one of the highest-grade tin resources globally with potential to become a new, low-cost global producer. The company also holds other mineral rights in Cornwall with potential for discovery of tin, copper, lithium, tungsten, zinc and silver mineralisation.



Sally Norcross-Webb

Cornish Tin - Founder & CEO

Cornish Tin is now advancing The Great Wheal Vor Project in the mining district of Breage, Cornwall. This is a group of 26 former producing tin and copper mines, described in 1929 as "the richest in tin of all the Cornish mines, probably the richest tin mine which has ever been worked in the world".

Sally is a corporate lawyer (background Allen & Overy, Slaughter and May, London; Allens, Sydney) and a mining, exploration and mineral rights professional with many years' experience in the mining industry. She holds both the MA and LLM degrees from Cambridge University.



Jeff Townsend

Critical Minerals Association - Founder & CEO

Jeff has over 20 years of experience working in the political sphere of Westminster, Capitol Hill and the Southern African Development Community.

His expertise in foreign affairs and international development has led him to advise senior Ministers, ambassadors and national leaders. Jeff is an expert at political strategy, campaigning and communications and has transferred these skills into the private sector providing political advice to FTSE100 and S&P500 companies. Jeff was born on a mine in Carltonville, South Africa and grew up in mining communities around the world following his father who worked in the sector. In 2011 he began the UK's All Party Parliamentary Group on International Mining and more recently founded the Critical Minerals Association and its political platform, the APPG Critical Minerals in Westminster. Jeff is a Director of a bespoke lobbying and finance firm.



MAYER | BROWN

WE PROVIDE THE COMPLETE LEGAL SOLUTION FOR THE MINING INDUSTRY

Mayer Brown has an established mining team offering expertise in project financing as well as experience in corporate and restructuring matters.

Consistently recognised as a top-ranked firm for Mining
by **Chambers UK** and **Chambers Global**

Americas | Asia | EMEA

mayerbrown.com



PROVEN SIZING SOLUTIONS

MMD Bulk Ore Sorting Systems

Lower costs & increase energy efficiency with MMD Sizer solutions

For 45 years MMD have remained at the forefront of Sizer technology. Combining unrivalled technical expertise, innovation and over experience, we engineer tailored Sizer solutions for a wide variety of materials and applications. The consistent product size and minimal fines generation, together with the ability to process any combination of wet, sticky, hard or abrasive material, has been a successful formula for thousands of installations worldwide. The MMD Sizer's performance and controlled product size has also led the way to develop reliable In-Pit Sizing & Conveying systems and bulk ore sorting systems.

Discover how we can deliver the best sizing solution for your mining and quarrying needs.



+44 (0) 1773 835533
info@mmdsizers.com
www.mmdsizers.com

Green Mining Solutions
Sizers | Feeders | IPSC



Lucy Cotton

Eden Geothermal Ltd - Principle Geologist

Lucy is a geologist with a decade in the UK's geothermal sector and is the Principal Geologist at Eden Geothermal. Previously, she was Geothermal Group Manager at GeoScience Ltd, serving as Lead Site Geologist for the drilling of both the United Downs Deep Geothermal Power project and Eden Geothermal in Cornwall.

Her recent focus has been driving the decarbonisation of heat for major UK industries, working with global players in distilling, pharmaceuticals, and food manufacturing.

Beyond the technical world, Lucy is passionate about making renewable energy exciting and accessible, whether through education programmes, animated storytelling with Miss Molecule and Friends, or fronting films like Power to the People.



Nick Hilton

ERM Ltd - Partner

Nick is a Partner at ERM, one of the world's leading sustainability consultancies and his current focus centres around ESG enabled capital project delivery, working with investors and developers to deliver successful projects and portfolios. He is currently focused on decarbonised infrastructure in the UK and the Middle East and has worked extensively in Europe, Africa, Asia and North America over the past two decades. His experience includes leadership of bankable studies for clients financed by the IFC, UKIB and EBRD as well as numerous infrastructure investment funds. He has led the EIA and ESIA process for mining and extractives projects ranging from coal bed methane extraction in Botswana to, most recently the Cornish Lithium Trelavour project in the UK. He holds an MBA from the Henley Business School and a Masters in International Law and has held board positions on several professional and public organisations in recent years.



Angela Bentley

ESTA

Angela is an Education Consultant, and chairperson of ESTA (Earth Science Teachers' Association). She is looking forward to working with amazing professionals to highlight the importance of Earth Science education. Earth Scientists are needed to resolve and mitigate many of today's issues: climate change, flooding, resources (to make your touch screen work), low carbon engineering, hazard management to name but a few.

She offers bespoke private tutoring, and is a member of the Royal Astronomical Society, an organisation that encourages and promotes the study of astronomy, solar-system science, geophysics and closely related branches of science.

Angela's achievements include an Oxbridge education and a winner of the Patrick Moore Medal Award in 2019.





Making the complex seem simple

At Hatch, we understand the unique challenges faced by the mining and metals industry. Our mission is to help you maximize the social and economic potential of your land assets in a sustainable and resilient manner. Whether it's short-term gains, medium-term growth, or long-term stability, Hatch is your partner for creating positive change.

- Process development
- Feasibility studies
- Engineering development and procurement
- Construction management
- Bulks materials handling
- Rail, ports & terminals
- Mine site remediation
- Digital twins for mine automation
- Socio-economic analysis and social value
- Environmental, sustainability, and resilience
- Town planning and place making
- Due diligence



Scan the QR code to explore our website or visit hatch.com





Rob Bridgman

Gowling WLG (UK) LLP - Partner

Rob is a partner at Gowling WLG based in Birmingham. A real estate property specialist by background, Rob has developed a niche practice in mines and minerals disputes (and acted in the recent High Court case of ARC Aggregates v Branston Properties Limited). Rob has extensive experience of advising minerals owners and developers in relation to severance claims and is the author of the Practical Law Company's practice note on mines and minerals.



Dr Graeme Nicoll

Halliburton Landmark - Principal Geoscience Advisor

Dr Graeme Nicoll is Principal Geoscience Advisor - Critical Minerals, at Halliburton Landmark. Graeme has over 15 years of industry experience. Graeme currently spends most of his time collaborating with the exploration groups within the major mining companies that are Halliburton clients, helping them to get the most value out of the Neflex solution from Landmark (a global Earth Model and framework for geological context), thinking holistically about geological systems and making subsurface mineral prospectivity maps that help clients reduce exploration search space.

Graeme has a degree in geology from Trinity College Dublin, Ireland and a PhD in Volcanic Structure and Geochemistry. He has five patents dealing with workflows and digital tools that exploit global geological systems to aid exploration, has numerous peer-reviewed publications and regularly presents at geological conferences. He has recently advised the UK governments research body on critical mineral funding.



Edward Hollings

Hatch Ltd

Edward has worked for 20 years in the minerals processing and metallurgy sector. He works for Hatch in London, and his role covers both Study Manager and Lead Process Engineer on a range of metals and mining projects.

Most recently his focus has been on the emerging battery metals and lithium space. In the past he has worked in a range of operations and projects in both base and precious metals, including gold, copper, cobalt, nickel, lead, zinc, tin and uranium processes.

He has a diverse range of experience across multiple process circuits, including milling circuits, concentrators, roasters, many types of leaching and gravity operations. His career has taken him around the world, working in several African nations, eastern Europe, Canada and Australia, before settling down in the UK. He is particularly interested in cross disciplinary projects such as geo-metallurgy and other big picture value improvers.



Invested in your success

Mining and mineral companies are governed by a complex web of international regulations. To succeed, you need a trusted legal partner with hands-on industry experience.

Gowling WLG is an international law firm providing legal services around the world, helping you to succeed no matter how challenging the circumstances.

For more information, please contact:

Charles Bond on T +44 20 3636 8050 or
charles.bond@gowlingwlg.com

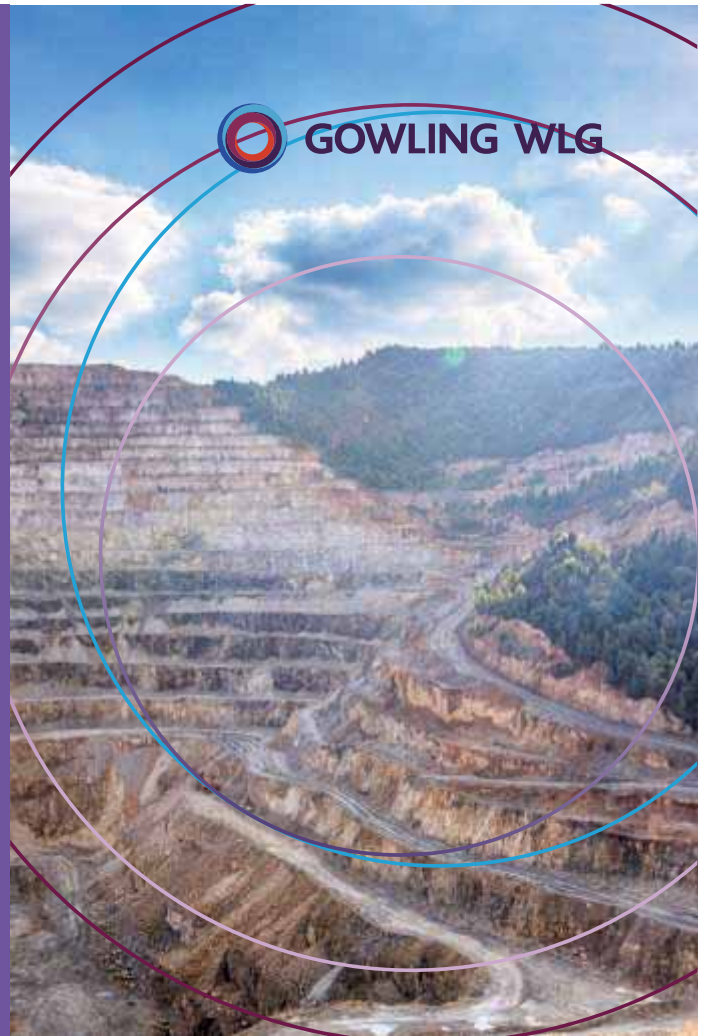


Learn more at
gowlingwlg.com

Gowling WLG (UK) LLP is a member of Gowling WLG, an international law firm which consists of independent and autonomous entities around the world. Our structure is explained in more detail at gowlingwlg.com/legal



GOWLING WLG



Zitrón



www.zitron.com





Neil Walmsley

Hatch Urban Solutions - Regional Director (UK/Europe)

Neil is a senior urban development professional with over 25 years of broad experience of strategy, policy, planning, design and delivery across UK, Middle East, South East Asia and Australasia. He has leveraged an academic foundation in civil engineering and transport planning to shape large, complex, multi-disciplinary urban developments and regeneration projects with a common theme of transport and land use integration. Key projects include Abu Dhabi's 2030 City Plan, Dubai's successful bid to host World Expo 2020, Indonesia's New Capital Master Plan and Singapore's Sentosa 2040 Growth Plan.

In 2021 Neil was appointed to the Singapore Government's 12 member Design Advisory Council (ongoing) in recognition of his extensive experience as a trusted advisor to an array of international public and private sector clients. As leader of Hatch's Urban Solutions business in UK and Europe, Neil is responsible for bringing a broad range of economics, planning and development skills to Hatch's core clients across mining, metals, energy and infrastructure. He is particularly interested in helping the mining and metals industry to maximise the social and economic potential of their land assets in a sustainable and resilient manner over the short, medium and long term.



Mark Godden

Health & Safety Executive - HM Principal Inspector of Health and Safety (Mining)

Mark Godden is employed as a mines inspector by the Health and Safety Executive. Prior to this he spent many years working within the quarrying and mining sectors whilst fulfilling several different managerial roles. Mark is a fellow of the IOM3, a chartered engineer, a fellow of the Geological Society, a chartered geologist, and a fellow of the Institute of Quarrying.



Daniel Howell

Health & Safety Executive - HM Principal Inspector of Mines

Daniel Howell is employed as a mines inspector by the Health and Safety Executive. Prior to this he spent many years in the drilling and mining sector and over 14 years being the Crown's representative as Deputy Gaveler for the Forest of Dean. Daniel is a member of IOM3.





Roland Chavasse

International Lithium Association (ILiA)- Co-Founder
& Secretary General

Roland Chavasse MBA is the Secretary General of the International Lithium Association (ILiA), the global industry body representing the lithium value chain, which he co-founded with Anand Sheth in 2021. Roland has a wealth of experience with rare and critical elements, including a decade of commercial experience working with tantalum, rhenium, cobalt, niobium and nickel-based superalloys. Since 2016 he has specialised in proactive metals association management, hosting conferences on four continents, managing responsible sourcing programmes, editing trade journals and always advocating for members' interests. He has previously lead the Tantalum-Niobium International Study Center TIC and the Minor Metals Trade Association (MMTA). He is based in London, UK.



Carol Richards

King Edward Mine - Trustee

After graduating from Camborne School of Mines, Carol joined Hunting Surveys as a geophysicist, before eventually moving back to Cornwall where for 15 years, she worked in the business development team at Reflex Marine Ltd.

Carol is a Director of Camborne School of Mines Association Ltd, a Trustee of King Edward Mine with a responsibility for marketing as well as being a regular guide for public tours of the museum.



Peter Snodgrass

King Edward Mine

After graduation from the Camborne School of Mines Peter joined ICI, initially working for Nobel's Explosives, before moving to the acrylics business, which today is part of Mitsubishi Chemicals. Prior to retirement in 2019, Peter was Sales and Marketing Director for the Methacrylate business in EMEA. On retirement Peter returned to Cornwall and lives near Falmouth.

Peter is a past Seniors Captain at Falmouth Golf club and a volunteer at King Edward Mine, assisting with strategic direction of the museum, as well as a valued guide.





Dean Thornewell

LiuGong Machinery (UK) Ltd - Managing Director

Dean is a seasoned British business executive with over two decades of leadership in the global mining equipment industry. He served as Operations & Service Director, later Managing Director at Joy Global Eurasia from 2008 to 2018, overseeing a £300 million operation and expanding the company's presence in Europe and Asia. Dean also represented Joy Global before the UK Parliament's Business, Innovation and Skills Committee, providing insights into the mining sector.

Following his tenure at Joy Global, Dean took on a role as Managing Director in the mining and construction component supply chain, leading the company through the challenges of the COVID-19 pandemic. In 2023, he was appointed Managing Director of LiuGong Machinery (UK) Ltd, where he is currently driving the adoption of battery-electric vehicles in mining and construction equipment.

Thornewell's career reflects a commitment to innovation and sustainable practices in the mining industry, positioning him as a forward-thinking leader in heavy industrial manufacturing.



Perran Moon MP

Member of Parliament

Born in Redruth, Perran is one of seven children born to his GP father and nurse mother. He had a 30 year career in business before joining Parliament, working for car manufacturers and an electric vehicle charging company. He is the MP for the furthest southerly Labour constituency in the UK, which also includes Perranporth, St Agnes, Porthtowan, Portreath, Pool, Stithians, Constantine and Mawnan Smith. He is one of four Cornish Labour MPs.

A great supporter and advocat for critical minerals mining and processing to ease the energy transition towards net zero.



Jayne Kirkham

Member of Parliament

Jayne is the Labour & Co-operative Prospective Parliamentary Candidate for Truro and Falmouth constituency, and a Labour & Co-operative Cornwall Councillor for Falmouth Penwerris. She moved to Falmouth 16 years ago, four weeks before her son was born and has lived here ever since.

As a former employment rights and trades union lawyer, she volunteered at the Falmouth Citizens Advice Bureau when she came to the area.

She sits on numerous committees – Homelessness Action Groups, European Funding committees, Keep our NHS Public, town council activities, the learning Disabilities Partnership Board, Plastic Free Falmouth, Circular Falmouth and work with the local BID and town manager to represent businesses in Falmouth Town.

Jayne chairs the town Placeshaping committee which is a Falmouth Town regeneration board consisting of elected representatives, businesses, the harbour board and commissioners, and the group has been successful in obtaining grant funding for the town.



Suzie Doe

Minerals Matter

Suzie Doe is a communications and stakeholder engagement specialist, currently working as the Industry Ambassador Programme at Minerals Matter, a UK-wide initiative developed in partnership with the Mining Association of the United Kingdom (MAUK).

In this role, Suzie oversees the strategic coordination of outreach efforts that connect professionals across the geo-resources sector with schools, universities and communities. Her work plays a vital role in raising awareness of the importance of minerals to the UK's economy and net-zero transition, while also addressing the sector's long-term skills and diversity challenges.

Her work has supported curriculum-aligned resources, ambassador training, and partnerships with education and industry bodies across the UK. Previously, she has contributed to major stakeholder engagement projects in the geo-resources sector, supporting public-facing communications on sustainability, innovation, and sector transparency.

Through these initiatives, she has helped improve industry visibility, support workforce development, and create lasting links between mining professionals and the next generation.



Nick Pople

Northern Lithium - Managing Director

Nick joined Northern Lithium in July 2020, with over 30 years' experience in investment, advisory, fundraising, project and direct corporate development experience, including specialist focus on sustainability technology and resource efficiency.

Nick is also a director of Green at Heart, a specialist sustainable investment consultancy established in 2017. He joined the Earth Capital Group in 2014 and was CIO of Earth Capital Asia Ltd in Hong Kong until 2019. Prior to that, he was co-founder of Ludgate Investments in 2000 and CEO from 2006. Before Ludgate, Nick spent eight years within the Barclays Bank Group both in London and Hong Kong focused on project, structured and corporate finance across energy, infrastructure and transportation.



Scott Mathieson

Panmure Liberum - Managing Director, Head of Resources and New Energy

Scott is Head of Natural Resources and a Managing Director in the Investment Banking team at Panmure Liberum. Focussed on the UK capital markets, Scott advises a range of listed and private mining companies with respect to their corporate financial and corporate broking activities with particular expertise across IPOs, equity & debt fundraisings and M&A.

UNEARTHING VALUE

A leading UK investment bank that puts long-term success above short-term gain, helping good companies succeed and delivering outstanding results.

With clients across the commodities spectrum we provide a full range of advisory services working to advise on mergers and acquisitions, equity, debt and private financings

PEEL
HUNT

PEELHUNT.COM



MONDE MULTIFUNCTIONAL ATTACHMENTS



MINI MOBILE JAW CRUSHER

JOIN
NOW



DEMOLITION SHEAR CUTTER



CRUSHER BUCKET

Contact Us



Richard Williams

Peak Nickel Ltd

Richard Williams, a Director of Peak Nickel Ltd, is a geologist and mining industry executive with over 35 years experience in mining, mineral exploration and project financing. Richard was formerly CEO of Cornish Metals Inc where he led the acquisition and advancement of the South Crofty tin project.

He is also CEO and Director of Winshear Gold Corp, a Canadian-listed gold explorer with copper and gold projects in Peru.



Kieron Hodgson

Peel Hunt LLP

PEEL HUNT



Henry Sanderson

Associate Fellow at the Royal United Services Institute (RUSI)

Henry Sanderson is a journalist and author based in London, focused on China clean energy. He is as an associate fellow at the RUSI think tank in London. He previously worked as a journalist for the Financial Times for seven years, covering commodities and mining, and before that was a reporter in Beijing for seven years, including for Bloomberg News.

He is the author of Volt Rush, the Winners and Losers in the Race to Go Green, which was chosen as a book of the week by the Observer, and one of the best science and environment books of 2022 by The Times.





Diane Frachon

SLB - Director New Energy UK & Corporate Ventures

Alongside her responsibility for SLB's UK New Energy Business, Diane is part of SLB's Corporate Ventures team, leading early-stage technology investments for the company's Industrial Decarbonisation, Renewables & Energy Efficiency and Critical Minerals businesses.

Over the course of her career, Diane worked in several industries including Automotive, Retail and Food across Europe, the Middle East, the US and South America. Her multifaceted expertise spans manufacturing, product development, project and P&L management.

Diane's entrepreneurial spirit led her to found and run her own company; she continues to play an active role in the startup ecosystem in an advisory capacity and now leverages her experience to drive innovation in the energy sector, she also serves on several Boards.

Diane joined SLB 12 years ago, holding roles in Sales, Marketing, Supply Chain and Corporate Ventures. She holds a master's degree in industrial management from HEC Paris, and Agro-Science Engineering from UniLasalle.



Kirsty Reynolds

SRK Consulting (UK) Ltd - Senior Consultant (Resource Geology)

Kirsty Reynolds (MSci, PhD, FGS) is a Senior Consultant (Resource Geology) with 12 years' experience, who specialises in Mineral Resource Estimation, 3D lithostructural modelling, and the interpretation of structurally complex mineral deposits. Kirsty has a PhD in Active Tectonics and Geophysics from The University of Cambridge, and at SRK has developed and presented Applied Structural Geology courses to mining professionals from all over the world. Kirsty has worked on a wide range of projects, deposit styles and commodity types, including gold, base metals, lithium, and iron ore, mainly in Central Asia, Europe, Africa and the Middle East, ranging from exploration properties to operating mines.



John Merry

SRK Consulting (UK) Ltd -Principal Consultant (ESG)

John Merry (MPhil) is a Principal Consultant with over 25 years of experience in social and environmental management in the mining sector. John has worked on projects covering numerous different commodities including, iron ore, bauxite, gold, copper, diamonds, gemstones and coal. His areas of expertise include project management; project design; impact assessment, health, safety and environment; community development strategies, stakeholder engagement, and government interface.





Carly Leonida

Moderator

The Intelligent Miner - Owner/author
Mining Media International – European Editor

A geologist and geographer by qualification; an outstanding freelance technical writer by profession. Carly had over a decade of experience working across the mining and metals, resources and engineering sectors.

Her own company is the Intelligent Miner, she is also the international editor for the Mining Media Group of publications.

THE INTELLIGENT MINER
WWW.THEINTELLIGENTMINER.COM



Jens-Michael Bergmann Dipl Ing (Meng) Mining

Tomra Sorting GmbH

Jens-Michael Bergmann is a specialist in sensor-based machine sorting with more than 20 years of experience. After graduating with a master's degree in mining engineering, Mr Bergmann became plant and operations manager of a German company owning multiple mines and quarries. There he learned the challenges of the mining and mineral processing business hands-on.

Before, during his university time, Mr Bergmann worked in underground coal mines and oil rigs around Europe. His practical background created the necessary experience to offer level technical consultancy around sensor-based sorting technologies to Tomra's international clients now.



Rajaram Jamadagni

UK Export Finance - Deputy Head of Renewables & Transition

Rajaram is a Deputy Head of Renewables & Transition at UK Export Finance, primarily responsible for underwriting solar, nuclear, gigafactories, battery and critical mineral sectors. He has deep experience in structuring, negotiating and successfully fund raising multi-billion project finance, structured finance, and corporate finance transactions in developed and emerging markets across energy, commodities, and infrastructure sectors.





Charles Hickson

UK Export Finance - Deputy Head, Strategic Sectors Division

Charles is the Deputy Head of UK Export Finance's Strategic Sectors Division, responsible for providing medium-long financing facilities for UK companies, their export contracts and overseas customer's projects utilising British goods & services. His current sectoral focuses include the automotive, agriculture, life sciences, precious and base metals mining and IT and technology sectors.

Charles has worked for UKEF since 2014 and has held a variety of roles across the Department's Business Group including most recently supporting renewable energy projects in the Renewables & Transition team.



Mark Cutifani CBE

Vale Base Metals

Mark Cutifani is recognised as a major industry leader and innovator with a global reputation for business transformation in large scale and complex minerals businesses. After 48 years working across six continents and producing most elements on the Periodic table in one form or another, he has consistently delivered industry leading outcomes from some of the most challenging assets and jurisdictions in the Global Minerals industry.

As the Chief Executive (CE) of Anglo American (AA), he spearheaded a nine year transformation that reduced material safety and environment incidents by 90%, while at the same time doubling employee productivity, reducing real unit costs by 40%, and delivering industry-leading capital and shareholder returns (+22% annual average total shareholder returns). Under his leadership, AA transitioned from lagging performance to becoming a recognised leader in sustainability and technical innovation, supporting material value creation through progressive social, technical, and commercial transformations.



Before Anglo American, as Chief Executive Officer (CEO) for AngloGold Ashanti, Mark led another successful turnaround, improving all facets of the business while resolving the industry's largest out of money gold hedge book. Mark has also held senior executive positions with Inco and Vale, the Normandy Group, Sons of Gwalia, Western Mining Corporation, Kalgoorlie Consolidated Gold Mines and CRA (Rio Tinto). Mark was also a past President of the International Council for Mining and Metals (ICMM) and the South African Chamber of Mines (now Minerals Council), solidifying his legacy as one of the most respected and effective leaders in the industry.

Consistent with his reputation for business transformational, Mark has been honoured by both the Australian and South African mining industries numerous awards, receiving the AusIMM Industry Award and the SAIMM Brigadier Stokes Awards, the peak industry awards for service to the industry. He has been recognised by Mines and Metals as the leading Mining Industry CEO in 2019 and in 2022 was awarded their Lifetime Achievement Award. In the areas of sustainability and responsible social development, he has been recognised by the Thomas Edison Global Innovation Awards for Collaborative Change through the Development Partner Institute (DPI), and he was the "Technoserve 50th Anniversary Honouree" – in honour of "extraordinary leadership in creating sustainable business solutions to end poverty around the world" and more recently as Europe's most sustainable mining leader. Mark has also been inducted into both the South African and US Mining Halls of Fame. Mark was recognised for his contribution to global mining in the UK in the 2024 King's New Year Honours list, being awarded a CBE (Commander British Empire) for his "contribution to Global Mining Investment".

Mark currently serves as a Non-Executive Director of TotalEnergies based in Paris and Senior Independent Director for Laing O'Rourke based in the UK. On 1 July 2023 he was appointed Chair of Vale Base Metals. He is also involved with numerous NGOs focused on global nutrition for women and children, ethical and sustainable business practices, and development of young and emerging business executives.

Helping miners move **less rock**, use **less energy**, use **water wisely** and create **less waste**

Weir is a global leader in mining technology. We recognise that our planet's future depends on the transition to renewable energy, and that transition can only happen with the metals and minerals our mining customers deliver.

With signature brands including ESCO®, WARMAN®, ENDURON®, GEHO®, CAVEX®, LINATEX® and MOTION METRICS™, we combine our deep customer insights, world class engineering, materials science expertise and intelligent automation to deliver innovative end-to-end mining technology solutions that help our customers move less rock, use less energy, use water wisely and create less waste — **accelerating the path to smart, efficient and sustainable mining.**

global.weir



Mining technology for a sustainable future

Providing specialist Tailings Engineering and Environmental Services to the Mining Industry



- Audits, Review and Risk Assessments
- Conceptual to Detailed Design
- Options Assessment
- GISTM Conformance
- Slope Stability and Seepage Assessments
- Ground Investigation
- Construction Management and QA/QC
- Water Management
- Mine Closure



Tel: 020 3096 0959

Email: London@knightpiesold.com

Website: www.knightpiesold.com



Erik Vlot BSc, MBA

Weir - Global Manager Tailings & Backfill

Erik achieved a BSc in mechanical engineering in 1992 and has more than 20 years' international experience in design, engineering and project execution in diverse geographies including Romania, Czech Republic, India, China, Europe and Australia. Since 2010 Erik has focused on the design and commissioning of PD pumps and slurry transportation and tailings systems and solutions. After completing his MBA on 'a Life Cycle Management review of tailings systems', Erik assumed global responsibility for PD pumps and systems, and currently holds the role of Global Manager for Tailings & Backfill at Weir – leading the global strategy and technical development of tailings systems. Erik is currently undertaking his PhD research on life cycle modelling for tailings systems. Having published various papers and articles since 2014 specifically focused on pump technology, Erik is passionate about helping mining become more sustainable, and changing the market perception and acceptance of thickened and paste tailings disposal.



Alex Griffiths

Wood Mackenzie - Director, Metals & Mining, Curated Services

Alex has been in the mining industry since 2007 – both in the pit and at the desk.

As the metals and mining lead for Wood Mackenzies curated services division, Alex talks about the role of metals in the energy transition, the investment required, and the pathway for metals to decarbonise. He works with investors, curating data and research specifically for their individual needs. He researches timely and relevant industry topics, has acted as an expert witness and collaborates on consultancy assignments.

Alex has an intimate knowledge of the mining industry having spent seven years working as an onsite resource geologist in outback Australia. Alex has also worked as an iron ore technical marketing consultant for a business intelligence group, and as a teacher of physics.

He holds an MBA from the Australian Institute of Business, a BSc from the University of Liverpool, a Post Graduate Certificate of Geostatistics from Edith Cowan University and a PGCE (Physics) from the University of Leeds.

SAVE THE DATE

10-11 June 2026

FALMOUTH

UK MINING CONFERENCE
IN CORNWALL



Proudly created by



Cornish Lithium



Event organised by

